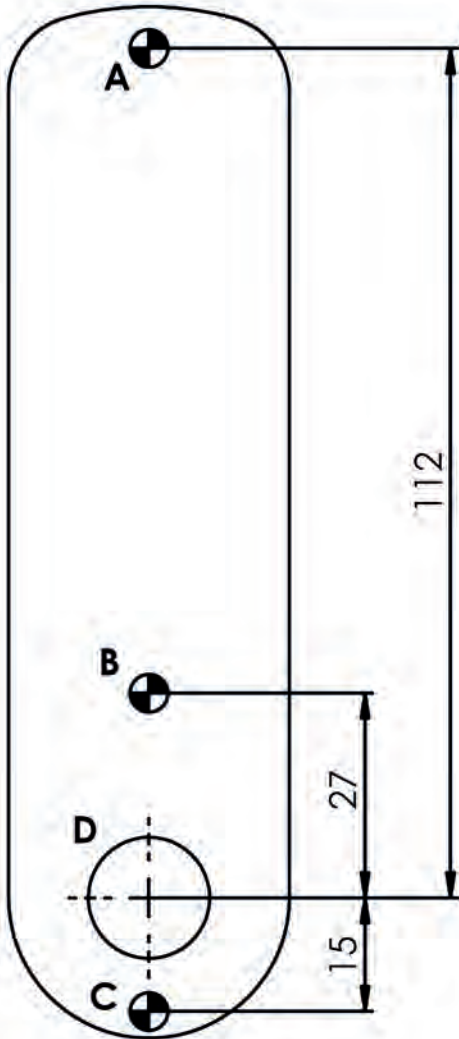


Installation Template



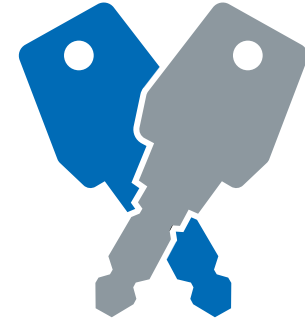
HOLES A, B & C DIAMETER 3.5 / 4.0mm
HOLE D DIAMETER 16.0 / 16.5mm
ALWAYS USE FIXING HOLE A
USE EITHER OR BOTH OF HOLES B & C

IMPORTANT NOTE

Before drilling fixing holes, please ensure that the position of the RFID Lock when fitted will allow clearance for the cam to function.

Please check that template is correct size before use – copies can be distorted

Cut Here



INSTALLATION INSTRUCTIONS

3786 Surface Mounted RFID Locks

Euro-Locks
Sicherheitseinrichtungen GmbH
Am Bruchwald 22
66280
Sulzbach/Neuweiler

T: +49 (0) 6897 9072 0
F: +49 (0) 6897 9072 99
E: vertrieb@euro-locks.de
W: www.euro-locks.de

L&F A Lowe & Fletcher Group Company

3786 Surface Mounted RFID Locks – 9224606 V11 Nov 2017

euro-locks.de

INSTALLATION INSTRUCTIONS

3786 Surface Mounted RFID Locks

Fitting Instructions

The RFID Lock can be fitted to cupboards, cabinets and lockers etc as a direct replacement for existing cam locks or for the Lowe & Fletcher 3751 Digital Combination Lock. It can also be easily fitted to cupboards and cabinets that do not have an existing locking device.

Special Notes

Before installing the RFID Lock, load the batteries and familiarise yourself with the operation and programming and that all cards provided function as you expect. Refer to the programming and operating instructions for guidance.

Installation Guide

IMPORTANT NOTES

This range of locks can be fitted with two or three screws. Always use the screw position "A" behind the logo button. Use either of the other two positions "B" & "C" or both if preferred.

Before drilling fixing holes, please ensure that the position of the lock when fitted will allow clearance for selected cam to work.

ENSURE BATTERIES ARE CORRECTLY FITTED BEFORE FIXING LOCK

A) New Installation

Step 1 Place template on door and mark TWO 3.5mm (9/64") holes (refer to installation diagrams). Use hole position "A" and either of positions "B" & "C". Mark ONE 16mm (5/8") hole (position "D").

Step 2 Drill both fixing holes and the 16mm clearance hole.

Step 3 Fit the Escutcheon and digital Combination Lock to the door by passing the spindle through the 16mm (5/8") hole.

Step 4 Fit at least two fixing bolts to suit your door thickness.

Step 5 Tighten the upper and lower bolt.

Step 6 Select the cam which suits your door and frame and attach it to the square shaft at the end of the spindle using a M4 x 6mm screw and washer.

Step 7 Now check the operation of the lock using one of the Master or User cards.

B) Replacing an existing cam lock with the 378- RFID Lock

Step 1 Remove existing cam lock.

Step 2 Place installation template on door over hole left by cam lock (position "D") and mark TWO 3.5mm (9/64") holes (refer to installation diagrams). Use hole position "A" and either of positions "B" & "C".

Step 3 Drill the two 3.5mm (9/64") fixing holes.

Step 4 Continue installation from step 3 to 7, above.

C) Replacing an existing L&F 3751 Digital Combination Lock with the 378- RFID Lock

Step 1 Remove existing electronic lock.

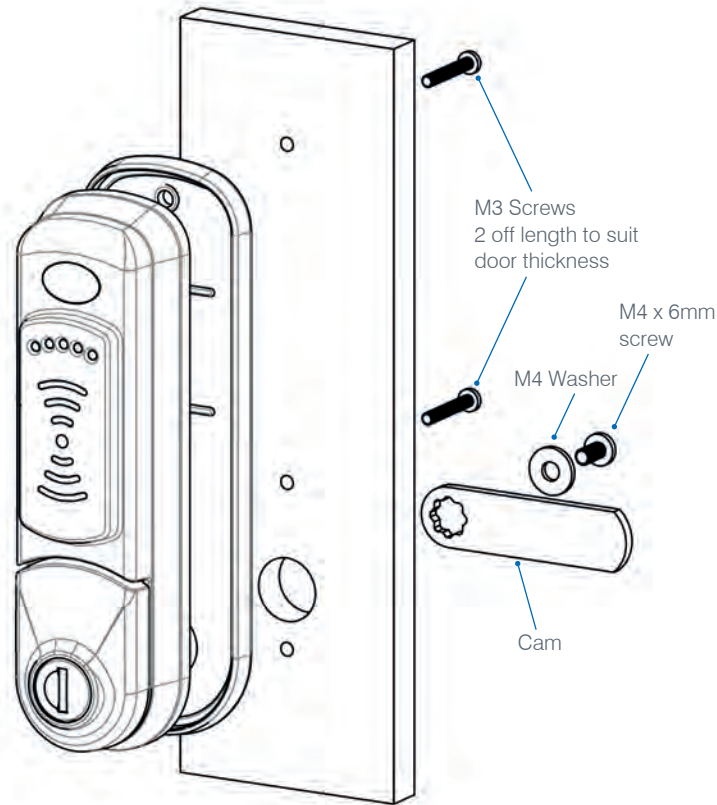
Step 2 Place installation template on door over the 16mm (5/8") hole left by digital lock in position "D" and the 4.5mm hole in position "A". Mark ONE additional 3.5mm (9/64") hole (refer to installation diagrams). Use either of positions "B" & "C".

Step 3 Drill the 3.5mm (9/64") fixing hole.

Step 4 Continue installation from step 3 to 7, above.

IMPORTANT

Keep your Master Card safe. In the wrong hands it is a serious security risk and it is not possible to re-program the lock without it.



HOLES A, B & C DIAMETER 3.5 / 4.0mm
HOLE D DIAMETER 16.0 / 16.5mm
ALWAYS USE FIXING HOLE A
USE EITHER OR BOTH OF HOLES B & C
Recommended screw fixing torque 0.8Nm